



### AVRDC-GRSU CHARACTERIZATION RECORD SHEET

Crop: *Solanum* spp. (Tomato)

Plot No. : \_\_\_\_\_ Accession No. : \_\_\_\_\_

Sowing Date: \_\_\_\_\_ Name: \_\_\_\_\_

Transplanting Date: \_\_\_\_\_ Species: \_\_\_\_\_

Location: \_\_\_\_\_ Origin: \_\_\_\_\_

#### SEEDLING DATA

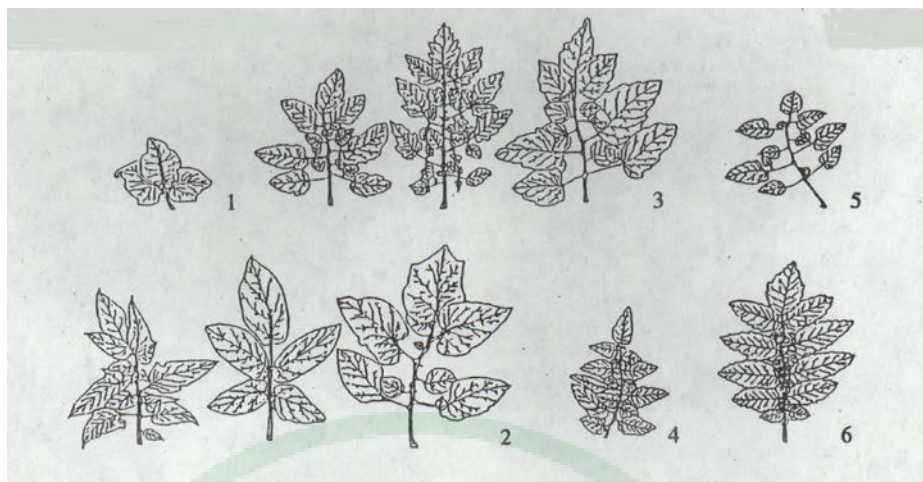
- L060 Germination period (發芽所需日數) \_\_\_\_\_  
(no. of days from sowing until first germination)
- L070 Anthocyanin coloration of hypocotyl (胚莖色) \_\_\_\_\_  
(when the seedling primary leaves are fully opened and the terminal bud is around 5 mm)  
0 = Absent    1 = Present    X = Mixture
- L120 Stem pubescence (莖絨毛) \_\_\_\_\_  
0 = Absent    3 = Weak    5 = Medium    7 = Strong
- L080 Primary leaf length (cm) (N=10) (子葉長) \_\_\_\_\_  
\_\_\_\_\_
- L100 Primary leaf width (cm) (N=10) (子葉寬) \_\_\_\_\_  
\_\_\_\_\_

#### VEGETATIVE DATA

- L090 Growth habit (when the fruits of first truss ripen) (生長勢) \_\_\_\_\_  
1 = Dwarf    2 = Determinate    3 = Semi-determinate    4 = Indeterminate  
X = Mixture
- L130 Number of leaves under first inflorescence (N=5) (第一花序下之葉數) \_\_\_\_\_  
\_\_\_\_\_
- L150 Leaf attitude (葉態) \_\_\_\_\_  
3 = Semi-erect    5 = Horizontal    7 = Drooping    X = Mixture

L160 Leaf type (葉型) \_\_\_\_\_

1 = Dwarf 2 = Potato leaf type 3 = Standard 4 = Peruvianum  
5 = Pimpinellifolium 6 = Hirsutum 7 = Other (specify) \_\_\_\_\_



L170 Degree of leaf dissection (整體葉型密度) \_\_\_\_\_

3 = Slight 5 = Medium 7 = High X = Mixture

L180 Anthocyanin coloration of leaf veins (葉脈花青素) \_\_\_\_\_

0 = Absent 1 = Present X = Mixture

### **INFLORESCENCE DATA**

Flowering date (date when 50% of plants have the most flowers) \_\_\_\_\_ (開花日期)

L210 Days to flower (開花日數) \_\_\_\_\_

(no. of days from sowing until 50% of plants have the most flowers)

L200 Number of flower per inflorescence (N=5) (每花序花朵數) \_\_\_\_\_

L230 Inflorescence type (花序型態) \_\_\_\_\_

(information should be taken from the 2<sup>nd</sup> and 3<sup>rd</sup> truss)

1 = Generally uniparous 2 = Generally multiparous 3 = Both

L270 Petal length (cm) (N=5) (花瓣長) \_\_\_\_\_

L280 Sepal length (cm) (N=5) (萼片長) \_\_\_\_\_

L290 Style type (柱頭型態) \_\_\_\_\_

1 = Inserted 3 = Same level as stamen 5 = Slightly exerted  
7 = Highly exerted X = Mixture

L300 Stamen length (cm) (N=5) (雄蕊長) \_\_\_\_\_  
\_\_\_\_\_

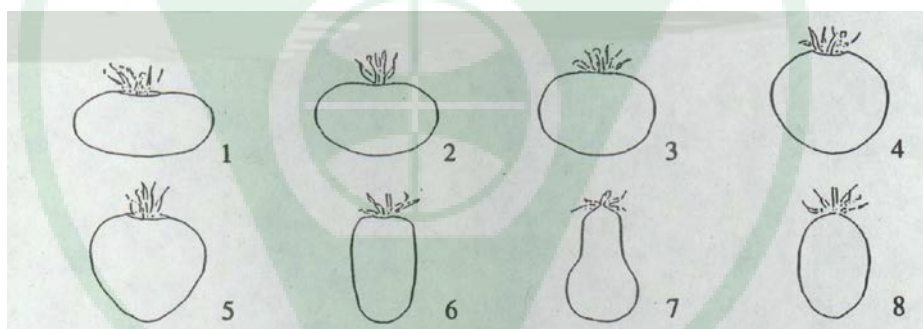
**FRUIT DATA**

First harvest date \_\_\_\_\_ (第一次採收日期)  
Last harvest date \_\_\_\_\_ (最後一次採收日期)  
Fruiting date (date when 50% of plants have mature fruits) \_\_\_\_\_ (結果天數)

L610 Days to fruit (結果日數) \_\_\_\_\_  
(no. of days from sowing until 50% of plants have the most fruits)

L320 Fruit size variation within a plant (果實大小變異) \_\_\_\_\_  
1 = Uniform 3 = Slight 5 = Medium 7 = High

L330 Predominant fruit shape (after the fruits turn color) (果型) \_\_\_\_\_  
1 = Flattened 2 = Slightly flattened 3 = Round 4 = High-round  
5 = Heartshaped 6 = Lengthened cylindrical 7 = Pearshaped  
8 = Plumshaped X = Mixture



L340 Exterior color of immature fruit (未成熟果色) \_\_\_\_\_  
3 = Light 5 = Medium 7 = Dark 9 = Very dark X = Mixture

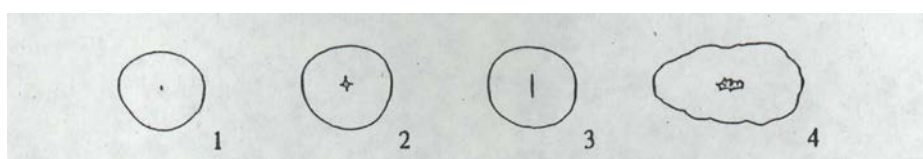
L350 Intensity of greenback (綠肩膀之深淺) \_\_\_\_\_  
0 = None 3 = Slight 5 = Medium 7 = Strong X = Mixture

L400 Presence of jointless pedicel (無離層果梗) \_\_\_\_\_  
0 = Absent 1 = Present X = Mixture

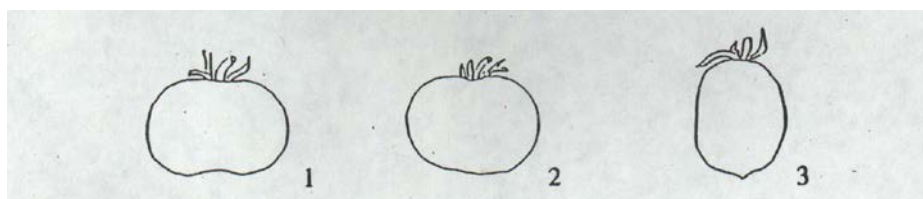
L410 Ribbing at calyx end (果面稜起紋程度) \_\_\_\_\_  
0 = Absent 3 = Slight 5 = Medium 7 = Strong X = Mixture

L430 Firmness (果實硬度) \_\_\_\_\_  
3 = Soft 5 = Medium 7 = Firm X = Mixture

- L440** Radial cracking (environmental dependent) (放射狀龜裂) \_\_\_\_\_  
 0 = None 1 = Corky lines 3 = Slight 5 = Medium 7 = Severe  
 X = Mixture
- L450** Concentric cracking (environmental dependent) (同心圓皸裂) \_\_\_\_\_  
 0 = None 2 = Corky lines 3 = Slight 5 = Medium 7 = Severe  
 X = Mixture
- L460** Fruit fasciation (果實帶狀化) \_\_\_\_\_  
 1 = Smooth 3 = Slight 5 = Medium 7 = Severe X = Mixture
- L470** Number of fruit set per inflorescence (N=10; the 2<sup>nd</sup> truss) (每花序著果數) \_\_\_\_\_  
 \_\_\_\_\_
- L480** Fruit weight (gm) (N=10) (果重) \_\_\_\_\_
- L490** Fruit length (cm) (N=10) (果長) \_\_\_\_\_  
 \_\_\_\_\_
- L500** Fruit width (cm) (N=10) (果寬) \_\_\_\_\_  
 \_\_\_\_\_
- L520** Exterior color of mature fruit (果色) \_\_\_\_\_  
 1 = Green 2 = Yellow 3 = Orange 4 = Red  
 5 = Pink 6 = Orange-red 7 = Orange-yellow X = Mixture
- L740** Pedicel length (mm) (N=10; measured from abscission layer to calyx) (果梗長) \_\_\_\_\_  
 \_\_\_\_\_
- L750** Pedicel area (側視果蒂區之凹陷程度) \_\_\_\_\_  
 1 = Flat 3 = Slightly depressed 5 = Moderately depressed  
 7 = Strongly depressed X = Mixture
- L760** Size of pedicel scar width (mm) (N=10) (果蒂寬) \_\_\_\_\_  
 \_\_\_\_\_
- L770** Size of corky area around pedicel scar (mm) (N=10) (果蒂木栓區大小) \_\_\_\_\_  
 \_\_\_\_\_
- L780** Shape of pistil scar (果頂部之雌蕊疤形) \_\_\_\_\_  
 1 = Dot 2 = Stellate 3 = Linear 4 = Irregular X = Mixture



**L790** Blossom end shape (果頂部形狀) \_\_\_\_\_  
 1 = Indented 2 = Flat 3 = Pointed X = Mixture

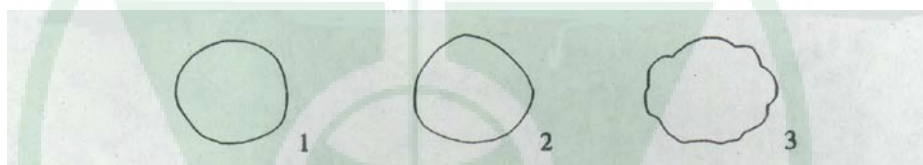


**L800** Blossom end scar condition (果頂痕是否開放情況) \_\_\_\_\_  
 1 = Open 2 = Closed 3 = Both

**L370** Interior flesh color (pericarp) (成熟果肉色) \_\_\_\_\_  
 1 = Green 2 = Yellow 3 = Orange 4 = Red 5 = Pink  
 6 = Other (specify) \_\_\_\_\_ 7 = Orange-red X = Mixture

**L380** Interior flesh color intensity (果肉色深淺) \_\_\_\_\_  
 3 = Light 5 = Medium 7 = Dark X = Mixture

**L390** Transverse section (果橫切面) \_\_\_\_\_  
 1 = Round 2 = Angular 3 = Irregular X = Mixture



**L510** Thickness of fruit wall (mm) (N=10) (果壁厚) \_\_\_\_\_  
 \_\_\_\_\_

**L530** Vascular bundle content (維管束含量) \_\_\_\_\_  
 3 = Slight 5 = Medium 7 = Severe X = Mixture

**L700** Color of core (果核色) \_\_\_\_\_  
 0 = Green 1 = White 3 = Light 5 = Medium 7 = Dark X = Mixture

**L710** Number of locules (N=10) (心室數) \_\_\_\_\_  
 \_\_\_\_\_

**L720** Thickness of pericarp (mm) (N=10) (心皮厚度) \_\_\_\_\_  
 \_\_\_\_\_

**L730** Size of core (mm) (N=10; in cross-section) (果核大小) \_\_\_\_\_  
 \_\_\_\_\_

**L810** Puffiness (果實橫切後腔室之空洞度) \_\_\_\_\_  
 0 = Absent 3 = Slight 5 = Medium 7 = Severe X = Mixture

- L950** Length of pedicel scar (mm) (N=10) (果蒂痕長) \_\_\_\_\_  
\_\_\_\_\_
- L360** Skin color of ripen fruit (observe the peeled fruit skin) (成熟果皮色) \_\_\_\_\_  
1 = Colorless 2 = Yellow X = Mixture
- L820** Easiness of peeling (剝皮難易) \_\_\_\_\_  
3 = Poor 5 = Fair 7 = Good X = Mixture
- L880** Soluble solids (%) (糖度) \_\_\_\_\_

